



HARVARD
Global Health Institute

ANNUAL REPORT 2023-2024





Advancing
Excellence and **Equity**
in Global Health

HARVARD
GLOBAL HEALTH INSTITUTE



MESSAGE FROM THE FACULTY DIRECTOR



Last year was a time of many new beginnings at the Harvard Global Health Institute (HGHI): a new governance structure, new team members, and a slew of new programs. These new engagements not only reaffirm our commitment to building knowledge and driving positive change in global health, but also open up opportunities for partnership within the Harvard community and beyond.

I want to take this time to extend my sincere thanks to our new Executive Committee and Faculty Steering Committee for their support and guidance. They generously took time out of their busy schedules to share their expertise to help us achieve the Institute's mission of advancing excellence and equity in global health.

Our team continues to explore new ways to engage with our global community. Last April, we launched two virtual series: Research and Innovation and Coffee Sessions. These series aimed at showcasing the research work of Harvard faculty and partnerships they fostered with international partners. More than 1,000 people from over 100 countries have joined these events since April 2024.

In August 2023, we welcomed our largest-ever cohort of fellows: 10 fellows from three fellowship programs, the new HGHI Burke Climate and Health Fellowship, the HGHI Burke Global Health Fellowship, and the Harvard LEAD Fellowship for Promoting Women in Global Health. We hosted our first All-Fellows Reception in April as an end-of-year celebration and to thank all the mentors for volunteering their time to help our fellows in their professional development.

Our Summer Internship program remains a core tenet of our undergraduate student programming. This year, 53 students joined internship positions at 25 global partners in six U.S. states and 15 countries.

As we step into the new academic year, I look forward to working more closely with our Executive Committee, Faculty Steering Committee, and partners across Harvard University and around the world.

Louise C. Ivers, MD, MPH, DTM&H

Faculty Director, Harvard Global Health Institute;
Executive Director, Massachusetts General Hospital (MGH) Center for Global Health;
David Bangsberg Endowed Chair, Global Health Equity, MGH;
Professor of Medicine and Professor of Global Health and Social Medicine, Harvard Medical School



FACULTY STEERING COMMITTEE

Formally established in Spring 2024, the 16-member Faculty Steering Committee came from various Harvard schools, departments, and its affiliate hospitals, reflecting the diversity of areas of expertise, identity, and experience in the Harvard University global health ecosystem.

Serving as ambassadors of HGHI, members of the committee will advise on and lead the Institute's key programs.



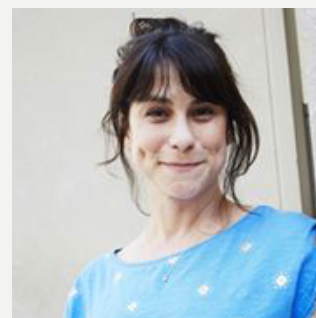
Marcella Alsan
Angelopoulos Professor of
Public Policy



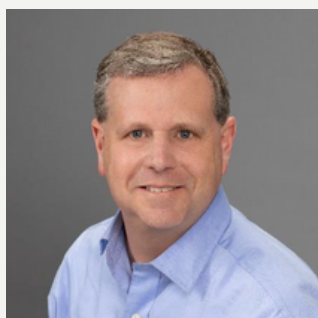
Satchit Balsari
Associate Professor in Emergency
Medicine and in Global Health and
Population



Sara Bleich
Vice Provost for
Special Projects



Jessica L. Cohen
Bruce A. Beal, Robert L. Beal, and
Alexander S. Beal Associate
Professor of Global Health



David Cutler
Otto Eckstein Professor of
Applied Economics



Mark Elliot
Mark Schwartz Professor of
Chinese and Inner Asian History



Sue J. Goldie
Roger Irving Lee Professor of
Public Health, Health Policy and
Management



FACULTY STEERING COMMITTEE



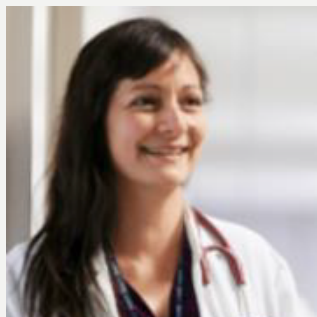
Vanessa Kerry
Chief Executive Officer
Seed Global Health; Associate
Professor of Medicine



Salmaan A. Keshavjee
Professor of Global Health and
Social Medicine



William Lensch
Associate Provost for Research



Shahin Lockman
Associate Professor in the
Department of Immunology and
Infectious Diseases



Suzanne McCluskey
Assistant Professor of Medicine



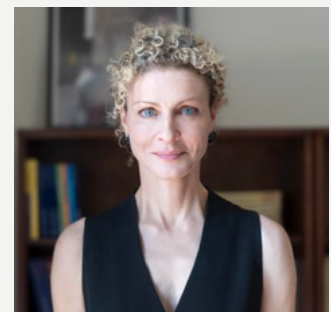
Megan Murray
Ronda Stryker and William Johnston
Professor of Global Health



Ruth L. Okediji
Jeremiah Smith, Jr.
Professor of Law

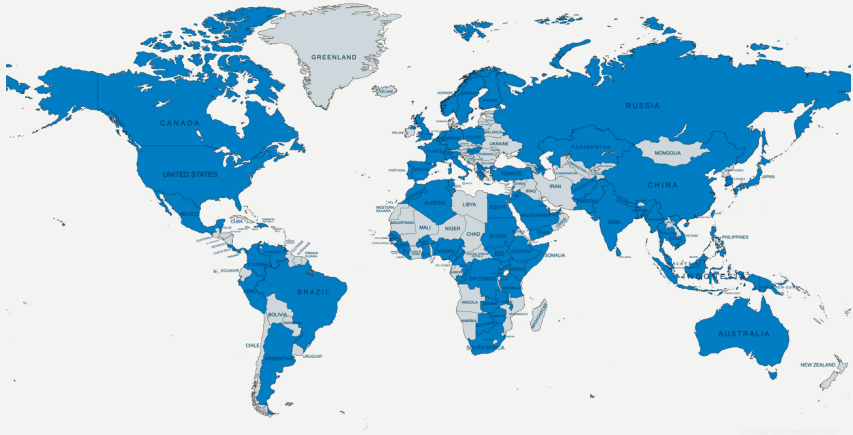


Robert Riviello
Associate Professor of Global
Health and Social Medicine



Alicia Ely Yamin
Lecturer on Law

GLOBAL HEALTH SYMPOSIUM



The second annual Harvard Global Health Symposium, centered on the theme "Partnerships in Action," was held on April 18th, 2024. The event brought together 23 experts from across the globe and within Harvard University to discuss the role of partnerships in achieving global health equity. Over 100 Harvard students, faculty, staff, and invited guests attended in person, while an additional 800 participants from 90 countries joined virtually.



23
speakers from
around the world



900
attendees
(in-person and virtually)



90
countries
represented



“Coming to Harvard, you feel that there's the space to really have serious dialogue, even if it's controversial at some places. But if you can't have it here, you can't have it anywhere else.”

– Austin Demby



Symposium Key Moments

Opening the event, Dr. David Walton, U.S. Global Malaria Coordinator of the U.S. President's Malaria Initiative, reflected on the role of accompaniment in global malaria response. The Symposium also featured 3 plenary sessions focused on the issues of AI in global health, the conflict between research and service delivery, and financing and governance in global health. Dr. Vanessa Kerry, WHO Envoy for Climate Change and Health, was joined by Harvard undergraduate student Nico Dominguez-Carrero for a conversation around the impact of climate change on health. The day closed with a keynote address from Dr. Rocío Sáenz, the former Minister of Health of Costa Rica, who spoke on the country's development and execution of a national immunization program.

2025
GLOBAL
HEALTH
SYMPOSIUM

APRIL
10th
2025

Cambridge, MA, USA
& Online

SAVE
THE
DATE



Global Health Coffee Sessions
A virtual series to explore the role of partnership and collaboration when working to advance global health equity.

Better Evidence, Better Training, Better Care: Supporting current and future clinicians in Africa to use evidence-based digital tools

Friday, April 26th, 2024
9:00 - 9:45 AM ET
Join us online!



Julie Rosenberg, MPH
Associate Director, Better Evidence, Ariadne Labs



Bilamin Oladele Popoola, MLIS
Systems, Scholarly Communications, and Evidence-Based Medicine Librarian, Champion for the Better Evidence for Training Program, University of Medical Sciences, Ondo City, Nigeria

Speakers will share their own perspectives; they do not speak for Harvard.

VIRTUAL EVENT SERIES

In April 2024, HGHI launched two new monthly recurring virtual series, **Coffee Sessions** and **Research and Innovation in Global Health**, to continue to explore HGHI's focus areas through highlighting innovative partnerships in global health and showcasing new and emerging global health research taking place at Harvard.

Coffee Sessions

HGHI Coffee Sessions take place on the last Friday of each month from 9:00am – 9:45am ET. The series spotlights global health researchers and practitioners from Harvard and beyond, exploring the role of partnership and collaboration when working to advance global health equity. Since its launch, the series has brought together over 400 participants from 54 countries.

April 26th: Better Evidence, Better Training, Better Care: Supporting Current and Future Clinicians in Africa to Use Evidence-based Digital Tools

The inaugural Coffee Sessions explored the partnerships and people that enable Better Evidence at Ariadne Labs. The panel featured Bilamin Popoola, the President of the Better Evidence for Training Champion Steering Committee and Librarian at the University of Medical Sciences in Nigeria and Associate Director of Better Evidence, Julie Rosenberg.

May 31st: Leveraging Partnerships to Improve the Health of Young People Living with HIV in Peru

Dr. Molly Franke, Associate Professor of Global Health and Social Medicine at the Harvard Medical School, was joined by Dr. Renato Errea, Head of the HIV Program at Socios En Salud, to highlight the essential role of partnerships in designing and evaluating interventions for young people affected by HIV in Peru.

June 28th: Oral Histories, Microsensors, and Parametric Insurance: When Poor Women Workers Drive the Research Agenda

SEWA members Manshi Shah and Kapilaben Vankar were joined by Dr. Satchit Balsari, Associate Professor of Emergency Medicine, Harvard Medical School and Beth Israel Deaconess Medical Center, to explore the role of meaningful research partnerships between academic institutions and communities. The panel highlighted SEWA's collaboration with researchers to develop climate adaptation products.

Research and Innovation in Global Health

The Research and Innovation in Global Health Series highlights the latest scholarly and scientific advancements in global health across Harvard and beyond, making cutting-edge research accessible to a diverse global audience, and to spark innovative solutions in the pursuit of health equity and improved health outcomes worldwide. Since its launch in early April, the series has attracted over 600 attendees and registered participants from over 90 countries.

April 9th: AI for Social Impact: Results from Deployments for Public Health

The first Research and Innovation series featured Dr. Milind Tambe, Principal Scientist and Director for “AI for Social Good” at Google Research, Gordon McKay Professor of Computer Science and Director of Center for Research in Computation and Society at Harvard University; who showcased his team’s work on AI for social impact, deploying end-to-end systems in areas of public health, conservation, and public safety.

May 14th: Innovation in the Treatment of Drug-resistant Tuberculosis: The endTB Clinical Trial

Dr. Carole Diane Mitnick, Professor of Global Health and Social Medicine at Harvard Medical School shared key takeaways from collaborative work on the endTB clinical trial.



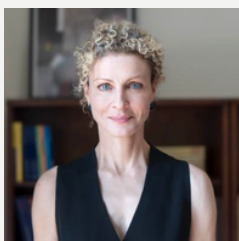
June 18th: Climate Change and Respiratory Health: From Epidemiology to Intervention Featuring Mary Rice, MD, MPH and Satchit Balsari, MD, MPH

Dr. Mary Rice, Director of the BIDMC Institute for Lung Health, Associate Professor of Medicine at Harvard Medical School shared her research on the respiratory health effects of climate change and opportunities for physicians and scientists to intervene at the clinical and policy level.

SCHOLARLY WORKING GROUPS

The Scholarly Working Group Initiative was launched in 2024, and is designed to encourage a collaborative environment, promote inter-faculty gatherings, and explore and accelerate research in topics critical to the advancement of “Health for All”. HGHI provided funding of up to \$20,000 through a competitive process to a limited number of working groups, alongside project management support and administrative support in hiring project assistance.

HGHI has awarded four working groups thus far, with a second award cycle underway. Each of the four working groups are led by Harvard faculty members and include members from at least two different Harvard schools. This effort builds on HGHI’s commitment to catalyze ideas, inspire the writing of grants and policy briefs and build a network to advance a program of work.



Advancing Global Health Justice

Led by Dr. Alicia Yamin, Lecturer on Law, Senior Fellow, Petrie-Flom Center at Harvard Law School; Senior Advisor on Human Rights and Health Policy, Partners In Health; Adjunct Senior Lecturer on Health Policy and Management, Harvard T.H. Chan School of Public Health, the group seeks to focus on the architecture of governance for global health and the background rules against which developments in global health.



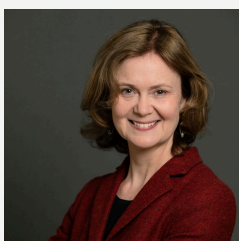
Access to Cancer Therapeutics in Low and Middle-Income Countries (LMICs) Through a Voluntary Licensing Strategy

Led by Dr. Aparna Parikh, Director of the Global Cancer Care Program at Massachusetts General Hospital and Associate Professor of Medicine at Harvard Medical School, the group aims to bring together members of the Harvard Medical School and the Harvard Law School to examine the role of expanded use of voluntary licensing for cancer therapeutics in low and middle income countries.



Climate Change and Health Collaborative

Led by Dr. Megan Murray, Ronda Stryker and William Johnston Professor of Global Health and Director of Research in the Department of Global Health and Social Medicine at Harvard Medical School, the Collaborative aims to advance action around conversations about the development of a joint approach to address climate-related health issues. The group includes faculty from Harvard Medical School, Harvard T.H. Chan School of Public Health, and the Faculty of Arts and Sciences.



Cholera: State of the Science Symposium

The Symposium gathered over 50 leading experts from 20 organizations across the globe to discuss the latest advances and gaps in cholera research in multiple areas, from pathogenesis and microbial interactions to new vaccine prospects, to innovations in epidemiology, surveillance, and population health.



FELLOWSHIPS

Fellowships are a powerful tool for academic institutions to nurture talent, drive innovation, and empower emerging leaders. Our fellowship programs offer valuable opportunities for Harvard junior faculty and global health leaders to advance their careers, receive expert mentorship, and connect with Harvard's diverse community of health professionals. Since 2009, the Harvard Global Health Institute has supported 72 emerging leaders through the Burke and LEAD Fellowship programs.

“*[The Burke Fellowship] allowed me to soar at a time when it would have been easy to give up.*”



Dr. Ingrid Katz, Burke Global Health Fellow '15

LEAD FELLOWSHIP

To equip and empower more leaders in global health, the Harvard Global Health Institute joined forces with the Global Health and Population Department at Harvard T.H. Chan School of Public Health to offer a transformational fellowship specifically designed to promote leadership skills in individuals from low- and middle-income countries who will, in turn, mentor future female leaders in global health.

During the spring semester, the LEAD Fellows spent 3 weeks on campus and participated in a series of Harvard faculty-led leadership workshops on policy analysis, negotiation, navigating organizational bias, and more.

They also participated in Harvard Kennedy School's week-long "Women and Power" course, met with Dame Jacinda Ardern, former Prime Minister of New Zealand, and led an incubation room with Co-Faculty Director of the LEAD Fellowship, Professor Jessica Cohen, at the Global Empowerment Meeting, Harvard Kennedy School's Center for International Development's flagship conference.

2023 LEAD FELLOWS



Marie Roseline Darnycka, MD, MPH, MSc, MBA, FETP

Dr. Darnycka is a medical doctor who has been working with the World Health Organization since 2015, serving as team leader of the Health Emergency Program in Mauritania as well as the incident manager of large and complex outbreaks in several other countries.



Brenda Kateera, MD, MPH

Dr. Kateera is a medical doctor, global health specialist, epidemiologist, and researcher who is currently serving as the Country Director for Clinton Health Access Initiative in Rwanda.



Katherine Ann V. Reyes, MD, MPP

Dr. Reyes is a medical doctor and a co-founder of the Alliance for Improving Health Outcomes (AIHO). She was recently appointed to establish the Institute of Health Promotion at the National Institutes of Health University of the Philippines Manila.

THOUGHTS FROM OUR PAST LEAD FELLOWS



Dr. Stela Bivol,
LEAD Fellow '19

Thanks to the LEAD Fellowship, I was able to start a new chapter in my career, switching from the public health non-profit world to a leadership role in the world's leading health agency, the World Health Organization (WHO). The skills I acquired through the fellowship program helped me ease into my new role and opened up opportunities for me to engage in policy and strategic discussions with decision-makers of 53 member states of the WHO European region.

Dr. Carmen Contreras,
LEAD Fellow '20

When I received the fellowship, I fulfilled a dream, as a professional and as a woman: studying in the best university in the world. After I finished the fellowship program, I won a scholarship for my doctorate and now I am a professor at a university. The LEAD Fellowship helped me visualize my potential and I am grateful for it.



Dr. Flora Nwagagbo,
LEAD Fellow '22



I was recently invited by the Centers for Disease Control (CDC) to serve as a mentor for the Locally Employed Staff Mentorship Program and as the co-chair of my Division's Diversity, Equity, Inclusion, and Accessibility (DEIA) Council. Before the fellowship, I would have focused efforts on de-biasing individual or group mindsets, but now I see a greater value in de-biasing systems and have a better understanding of how to exercise leadership to advance DEIA in my agency and in our global health practices, processes, policies, and research.

BURKE GLOBAL HEALTH FELLOWSHIP

The HGHI Burke Global Health Fellowship program at the Harvard Global Health Institute provides funding for postdocs and Harvard junior faculty for their innovative research and curriculum development and teaching in global health. For the 2023 cohort, HGHI awarded four global health fellows:

Lao-Tzu Allan-Blitz, MD, MPH

Maria Nardell, MD, MPH

Dee Jordan, PhD, MPH

Shela Sridhar, MD, MPH



BURKE CLIMATE AND HEALTH FELLOWSHIP

The Harvard Global Health Institute partnered with the Salata Institute for Climate and Sustainability and launched the Climate and Health Burke Fellowship in 2023. This 2-year fellowship supports scholarly research at the important intersection of climate change and global health, an up-and-coming, transdisciplinary area of study. The inaugural fellows are:

Annikki Herranen-Tabibi, PhD, MA

Jenny Lee, PhD, MS



THOUGHTS FROM OUR PAST BURKE FELLOWS

Dr. Jocelyn Kelly,
Burke Global Health Fellow '22

The HGHI Fellowship was a transformative opportunity. It gave me the chance to pilot an intervention to reduce violence against women working in climate-fragile environments. This work is now being supported by USAID and IUCN and is creating learning that has potential to inform global learning.



Dr. Lydia Pace,
Burke Global Health Fellow '16

The HGHI Fellowship allowed me to conduct preliminary research in an area that has been understudied and that I am passionate about, which in turn allowed me to apply for continued funding. That opportunity truly laid a foundation for my research career and allowed me to pursue continued work in global health.



Dr. Arachu Castro,
Burke Global Health Fellow '09

The Burke fellowship catalyzed my career, equipping me with the leadership and coordination skills to direct research projects in multiple countries and make impactful contributions to global public health.



STUDENT ENGAGEMENT

HGHI provides Harvard undergraduate students with opportunities to think critically and to engage actively with public and global health challenges. We collaborate with partners across the university and around the world to facilitate unique opportunities for learning.

SUMMER RESEARCH & INTERNSHIP PROGRAM

Launched in 2009, the program provides meaningful and substantive summer experiential learning opportunities for undergraduate students. Each year, we partner with organizations in the US and internationally to host and mentor undergraduate students for 10-week internships from June to August.

There are four different types of opportunities:

- Summer Undergraduate Research in Global Health (SURGH)
- International Summer Research & Internship Program (ISURGH)
- General internships with global health organizations
- Independent student-led projects

This year, we received 451 applications for the summer internship program. 53 students were selected to join internship positions amongst 25 of our global partners.

The internships took place both domestically and internationally, in 6 U.S. states and 15 countries including Botswana, Peru, the United Kingdom, Switzerland, and India. The interns participate in their internships in all 3 formats; in-person, hybrid, and remote.

Over the summer, HGHI organized weekly activities to complement the student's internship experience.

Students also had the chance to sit down with notable Harvard faculty, including Professors Kari Nadeu and Jocelyn Chu, to engage in conversations around their work.

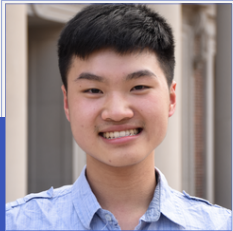
Other programming highlights include an informational site visit to the Harvard T.H. Chan School of Public Health and a careers conversation with past HGHI summer interns.



STUDENT ADVISORY COMMITTEE

The Student Advisory Committee (SAC) was created in 2015 as a collaboration between HGHI staff and students, with a mission to promote student leadership and build community among undergraduates at Harvard interested in global health. The SAC supports cross-disciplinary collaboration and communication among students through community-building events, resource generation, and peer mentoring.

Meet our 2024 Student Advisory Committee!



John Lin
Co-President



Izumi Vazquez
Co-President



Keira Adams



Arsema Aklog



Aurelia Chen



Anais Colin



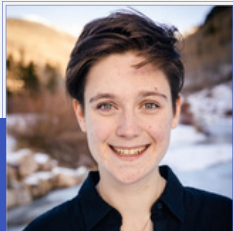
Cristian Gaines



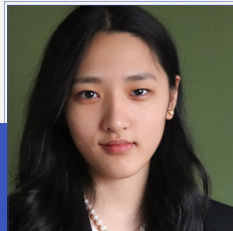
Divangel Guerrero



Ye Won Ham



Zazie Huml



Tsering Yangchen

COURSES



The Harvard Global Health Institute supports a number of undergraduate courses with a strong focus on global health. These include courses that fulfill some of the requirements for the Harvard College Program on General Education (Gen Ed) and foundational courses for the Secondary Field in Global Health and Health Policy.

Courses supported by Harvard Global Health Institute:

- GenEd 1093 – Who Lives, Who Dies, Who Cares? Reimagining Global Health
- GenEd 1063 – World Health: Challenges and Opportunities
- GHHP 20 – Maternal & Reproductive Health and Health Policy
- GHHP 50 – The Quality of Health Care in America
- GHHP 70 - Global Response to Disasters and Refugee Crises
- ESPP 180 – Climate Change, Health, and Environmental Justice-Focusing on Solutions

PROGRAMS AND EVENT AT A GLANCE

July 2023

Summer internship programs in session

August 2023

Summer internships in session
SURGH Poster Session

September 2023

Welcome events for Burke and LEAD Fellows 2023-2024
Summer program info sessions, fairs, & recruitment events
Pathways to Global Health

October 2023

Global Health Internship Showcase
Pathways to Global Health

November 2023

Pathways to Global Health

December 2023

Applications for 2024 Summer Internship Programs open

January 2024

LEAD and Burke Fellowships application open

February 2024

Applications for 2024 Summer Internship Programs close
Scholarly Working Group: Power and Money in Global Health
Pathways to Global Health

March 2024

Pathways to Global Health
2024 LEAD Fellows On-campus Session begins

April 2024

2024 Global Health Symposium
Research and Innovation Coffee Session
Pathways to Global Health
All-Fellows Reception
VISITAS Global Health Open House and HGHI Intern pre-departure workshops

May 2024

Research and Innovation
Coffee Session

June 2024

Research and Innovation
Coffee Session
2024 Summer Internship Program begins
Scholarly Working Group: Cholera Symposium
Scholarly Working Group: Climate Change and Health Collaborative
Webinar: H5N1: The Current State of the Avian Flu Outbreak

HARVARD

GLOBAL HEALTH INSTITUTE



Harvard Global Health Institute
42 Church St.
Cambridge, MA 02138

GLOBALHEALTH.HARVARD.EDU

